

Woodland Management Principles and Practice

An introduction for community volunteers

Paul Bullimore

Community Forester



Woodland Management Principles and Practice

An introduction for community volunteers

Paul Bullimore

Community Forester

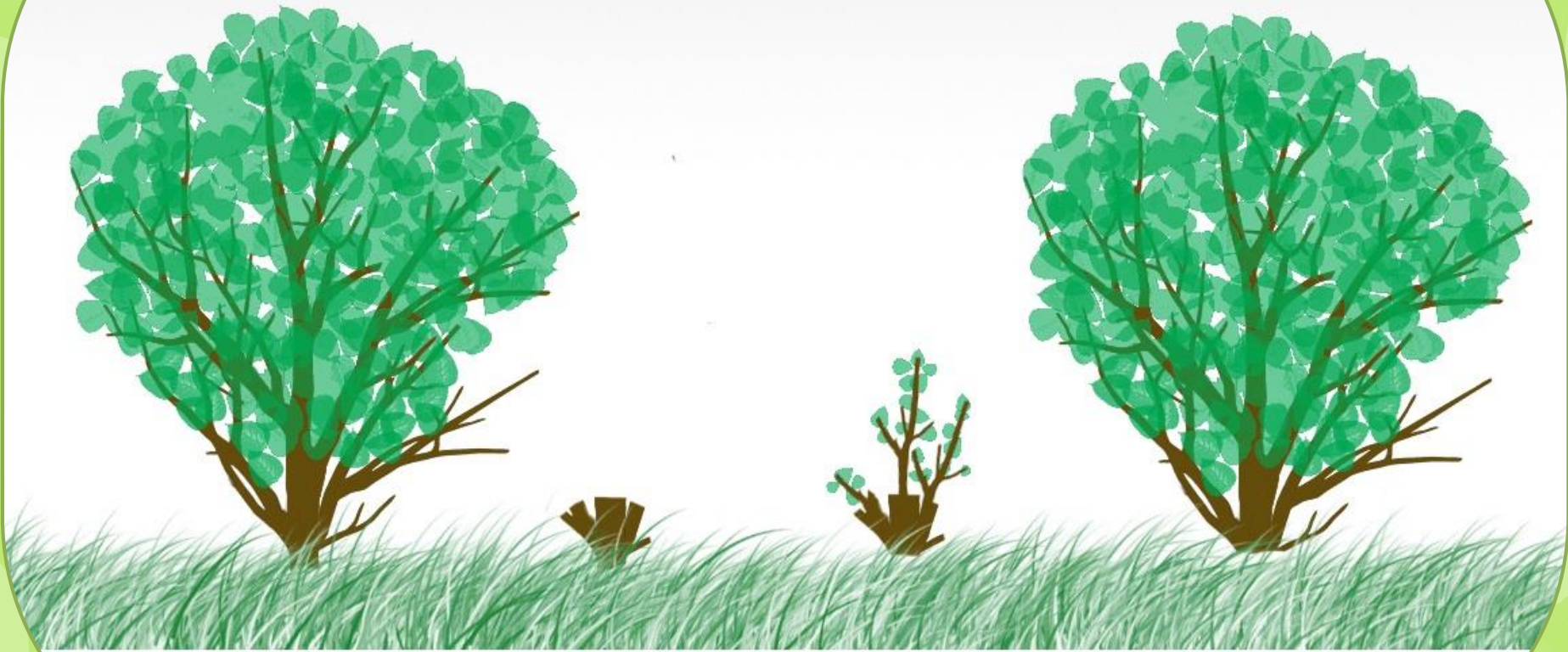


Session Four

Coppicing Felling and Pruning



What is coppicing?



**BEFORE
SHRUB TO BE
COPPICED**

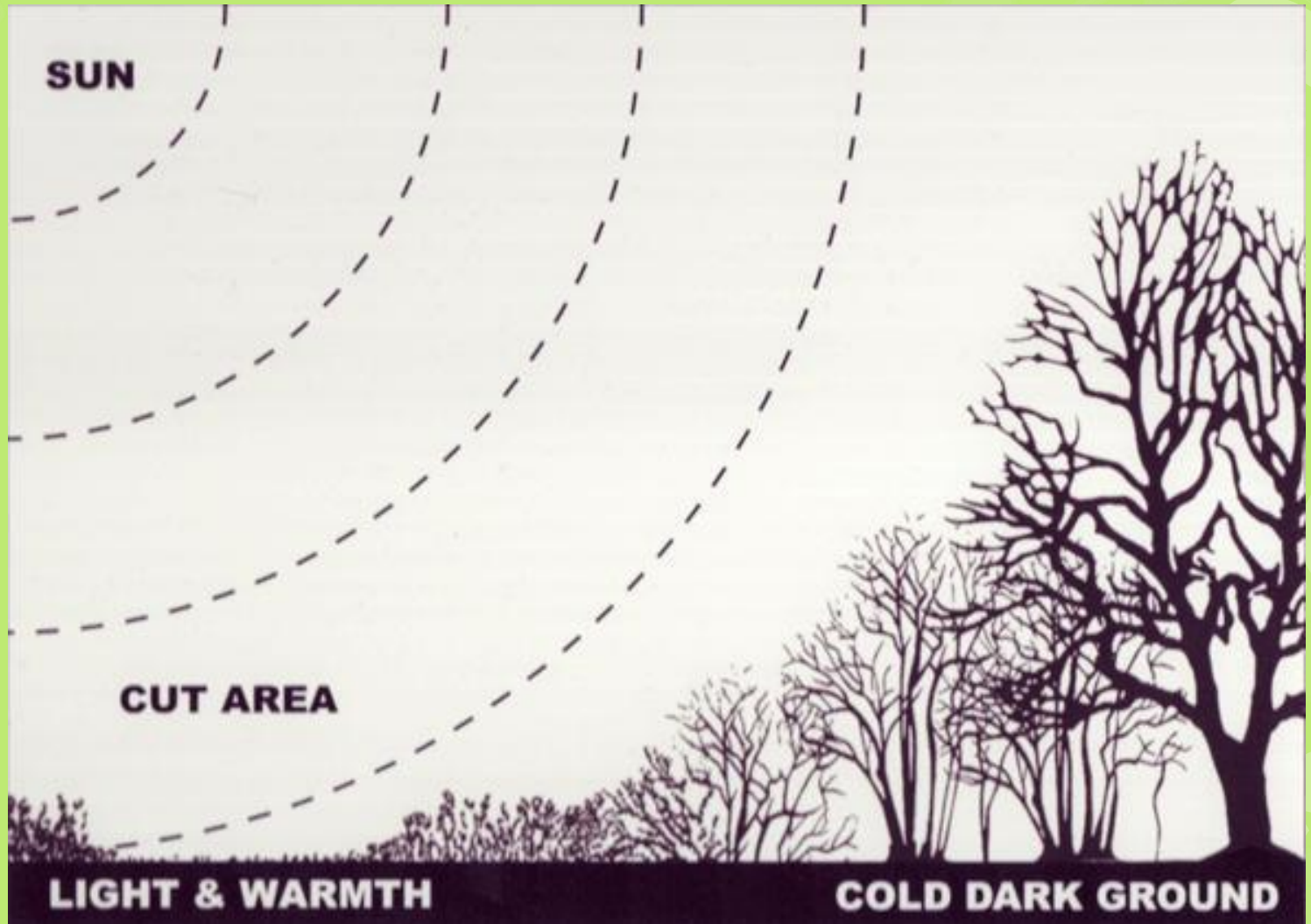
**CUT CLOSE
TO THE BASE
IN WINTER**

**FOLLOWING THE SPRING
SHOOTS RAPIDLY
REGROW FROM STOOL**

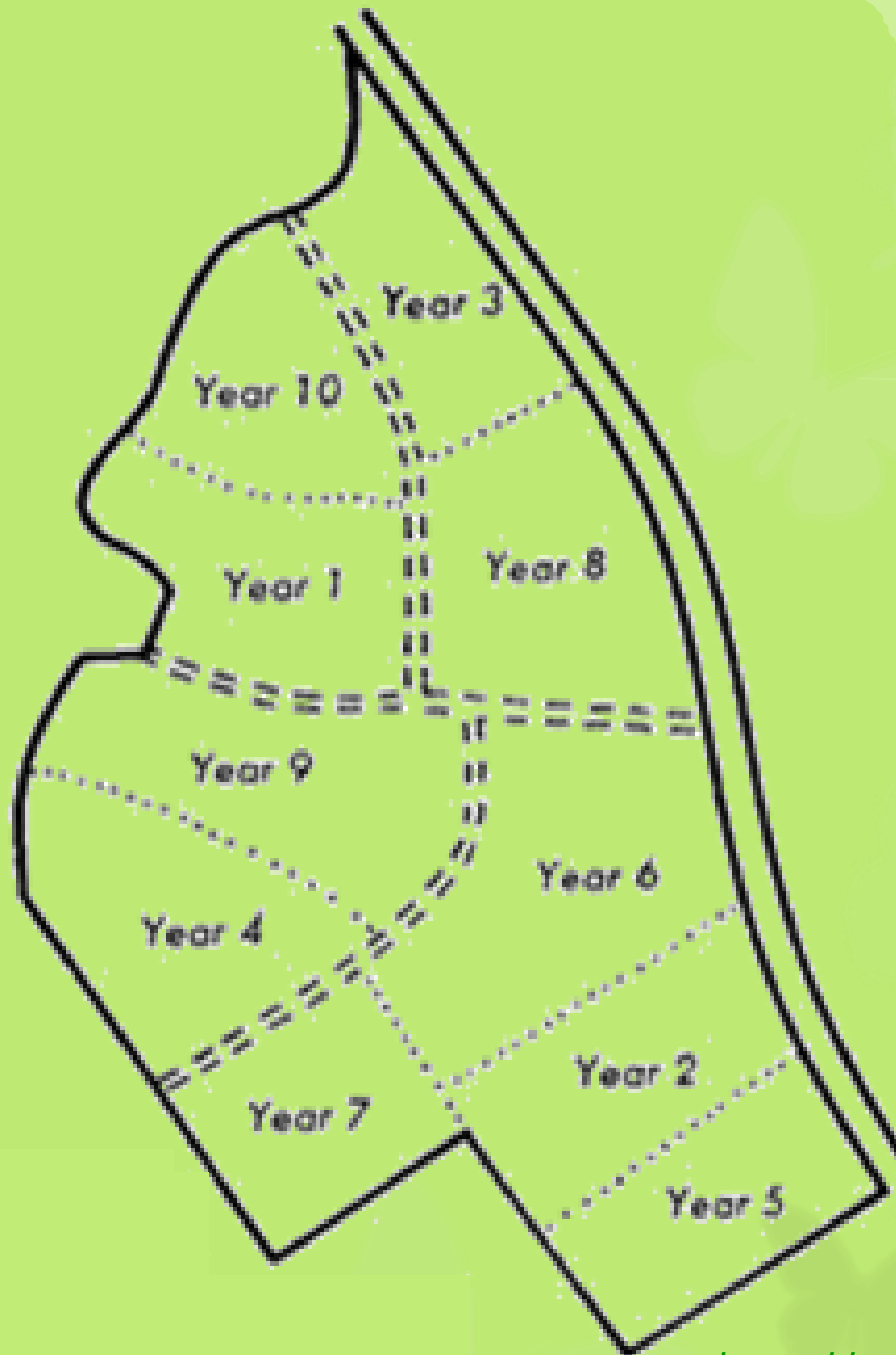
**SHRUB READY
TO BE COPPICED
AGAIN**



Why do we coppice?



Coppice rotation



What do we coppice?

Most broadleaved trees and shrubs but especially:

- **Hazel**
- **Ash**
- **Oak**
- **Birch**
- **Alder**



How do we coppice?

Cut the
tree
down to
a stump



Products

- Pea sticks
- Bean poles
- Hedging stakes
- Hurdle rods
- Charcoal



Dealing with the cut material

- Bundle useful material for removal
- Create habitat piles
- Dead hedging
- Brash piles over cut stumps
- Build dens!



Tree Felling

Why do we fell Trees?

- To improve the woodland and the habitat it provides
- Let more light in to the ground
- Regeneration of trees
- Dangerous trees



Practical Skills

- Safe tree felling
- Proper pruning techniques
- Manual handling



DIRECTION OF FALL



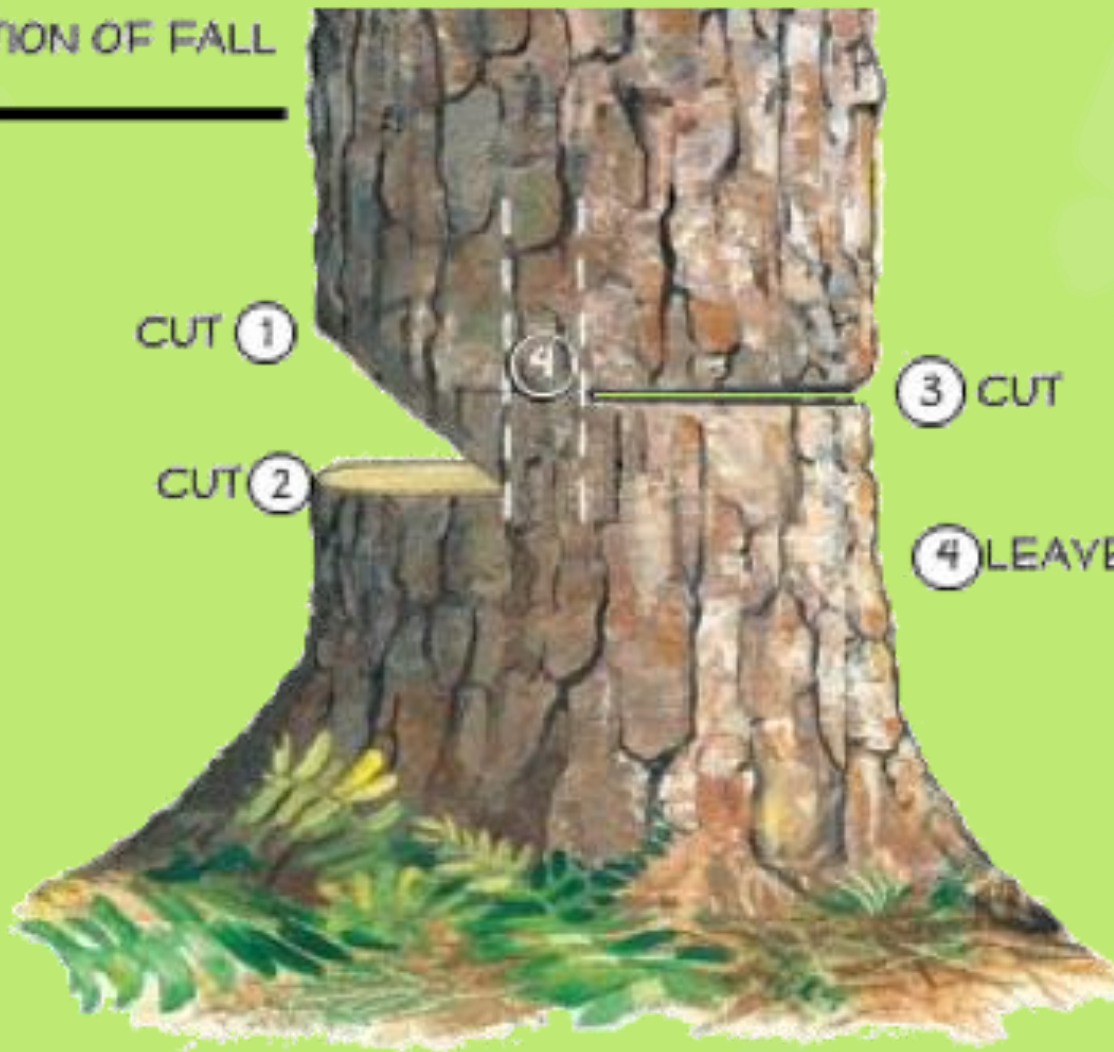
CUT ①

CUT ②

④

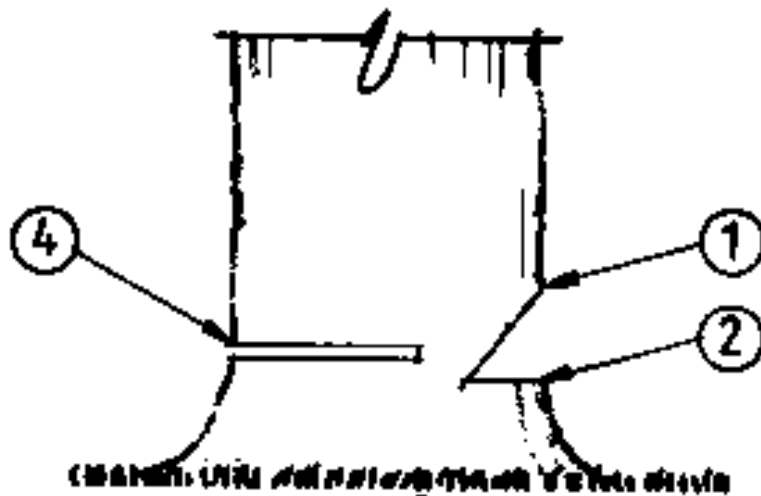
③ CUT

④ LEAVE 2 INCHES





ELEVATION

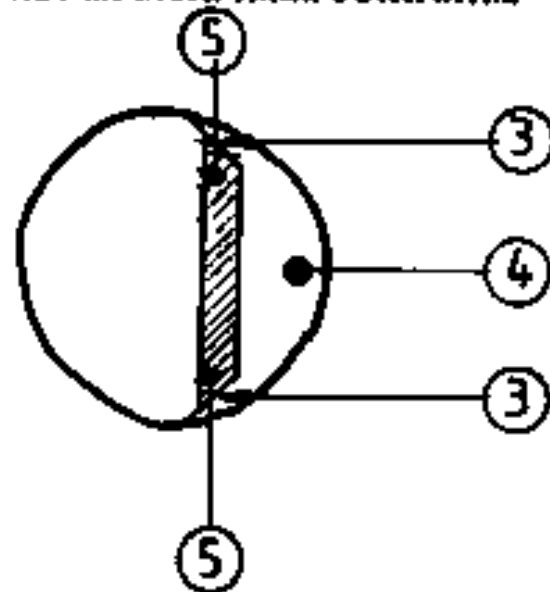


direction of fall

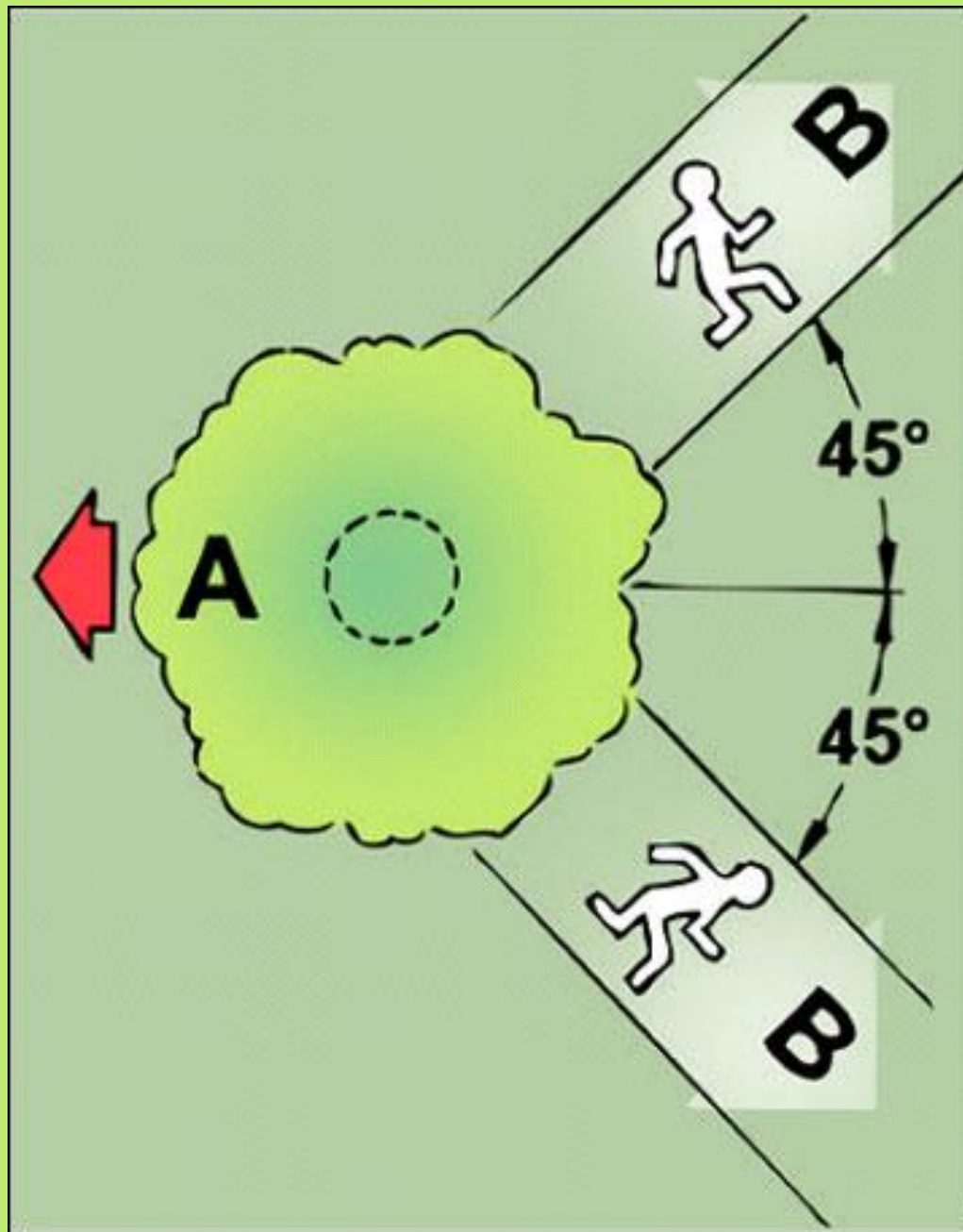


- ① top scarf cut
- ② bottom scarf cut
- ③ small, lateral cuts
- ④ main felling cut
- ⑤ hinge wood

PLAN



direction of fall



Pruning



Why do we prune trees?

- Remove obstruction
- Remove damaged or diseased part
- Make the plant more attractive



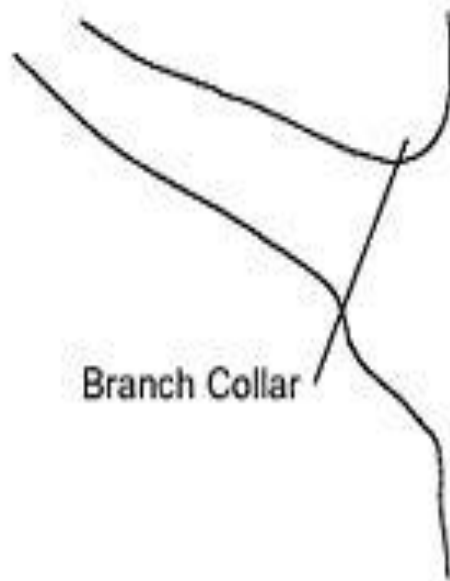


Fig. 1

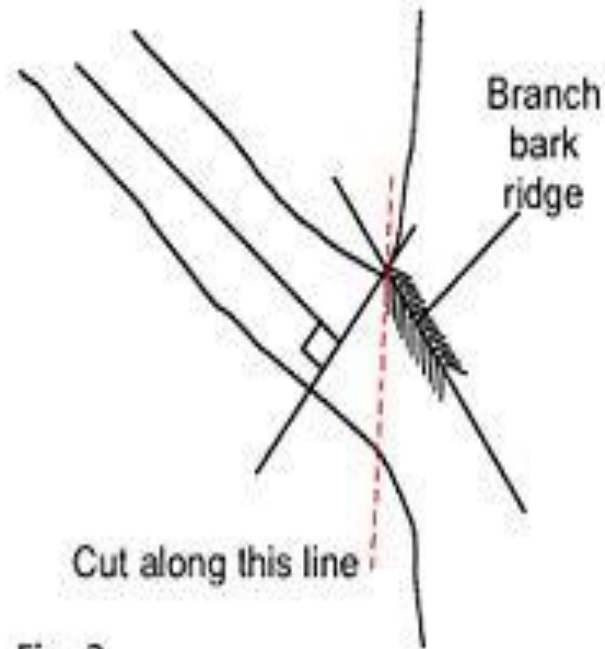


Fig. 2

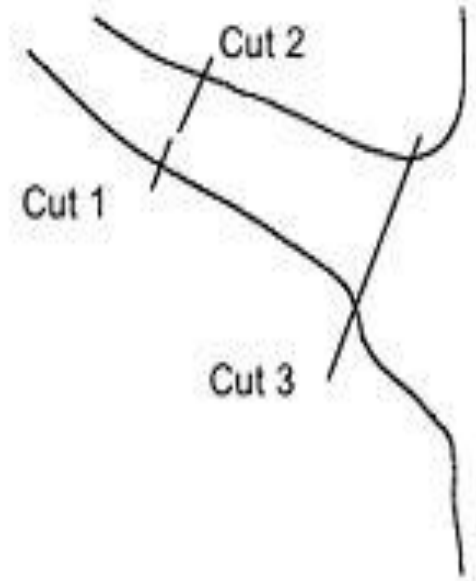
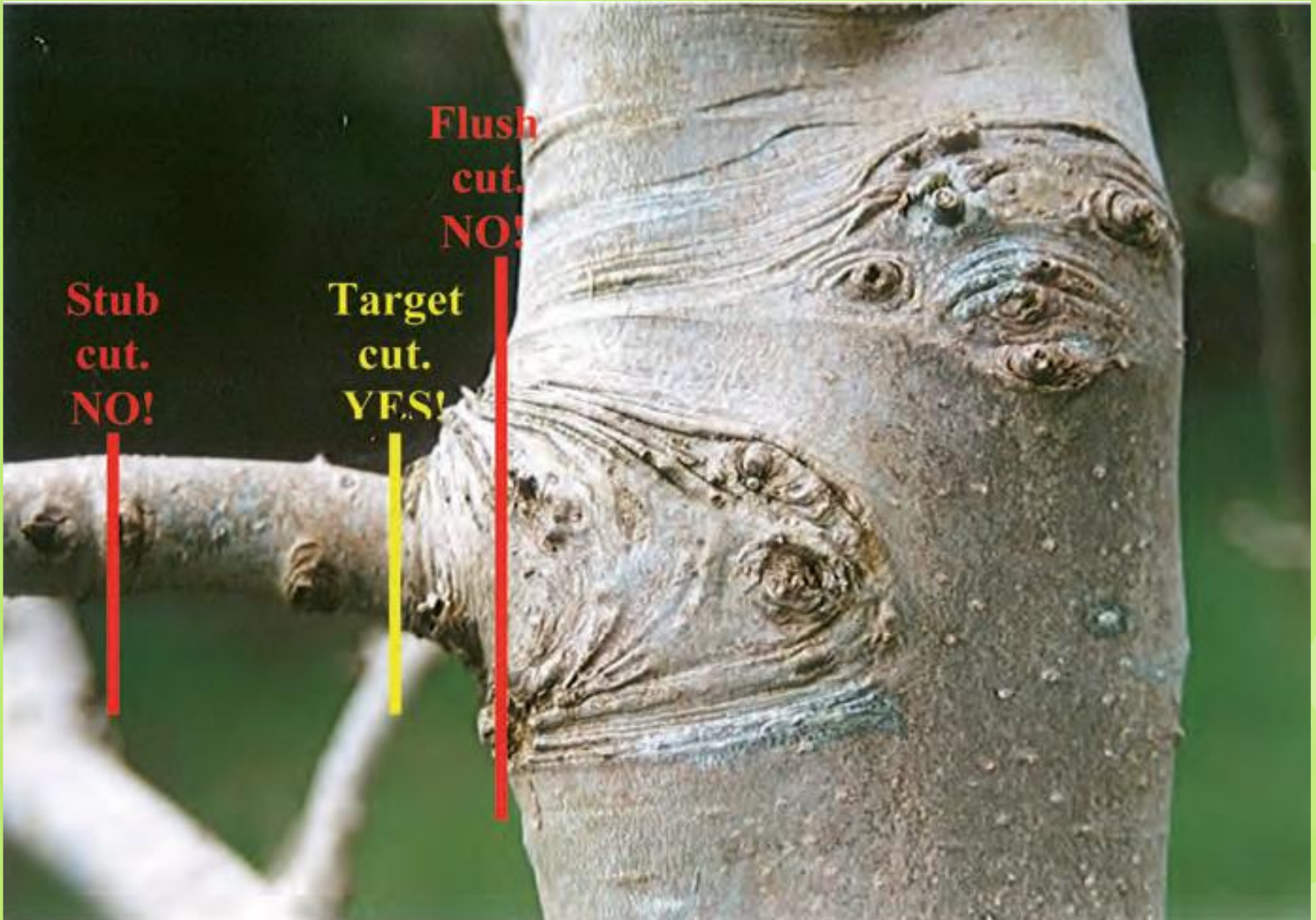
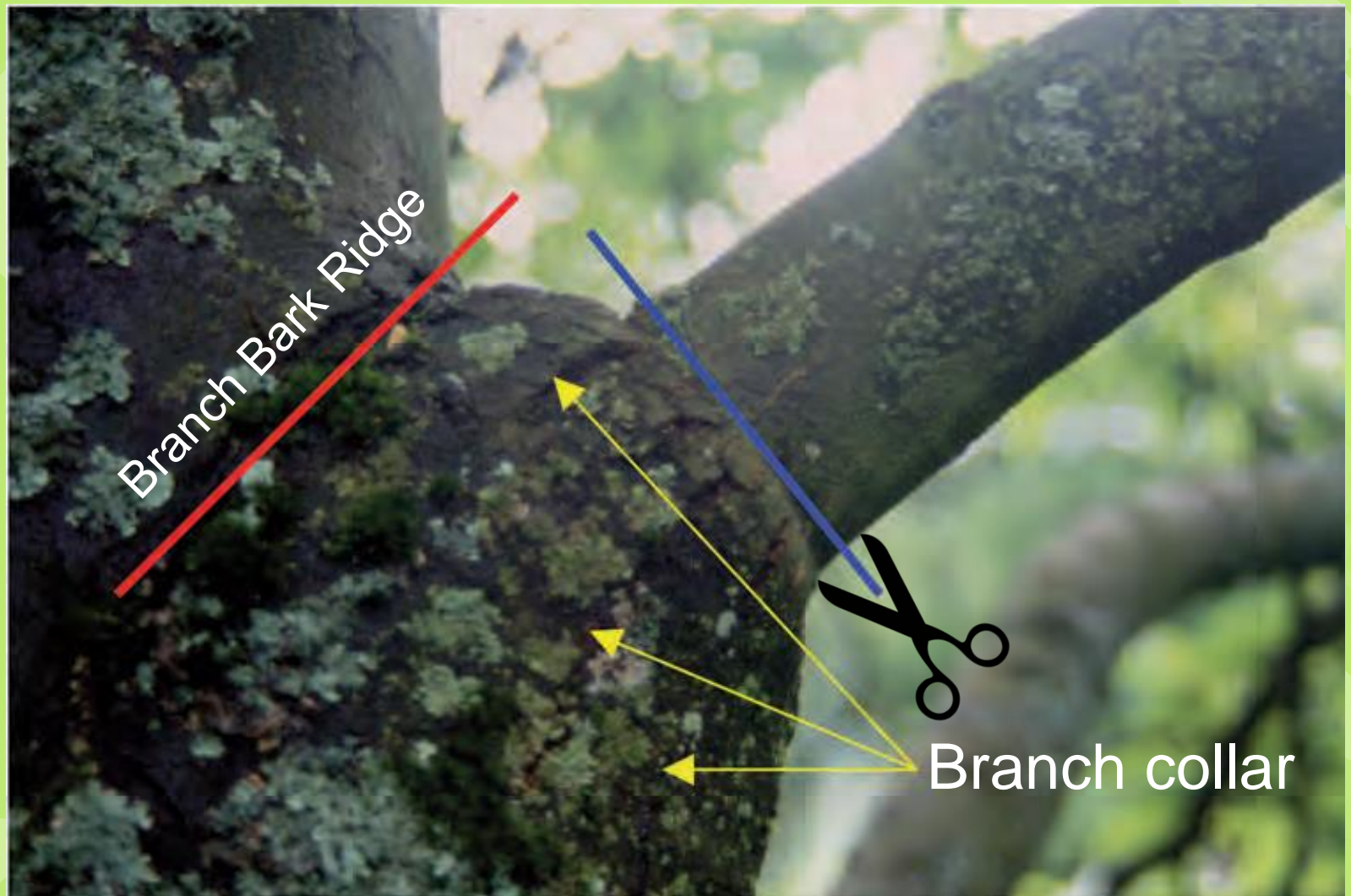


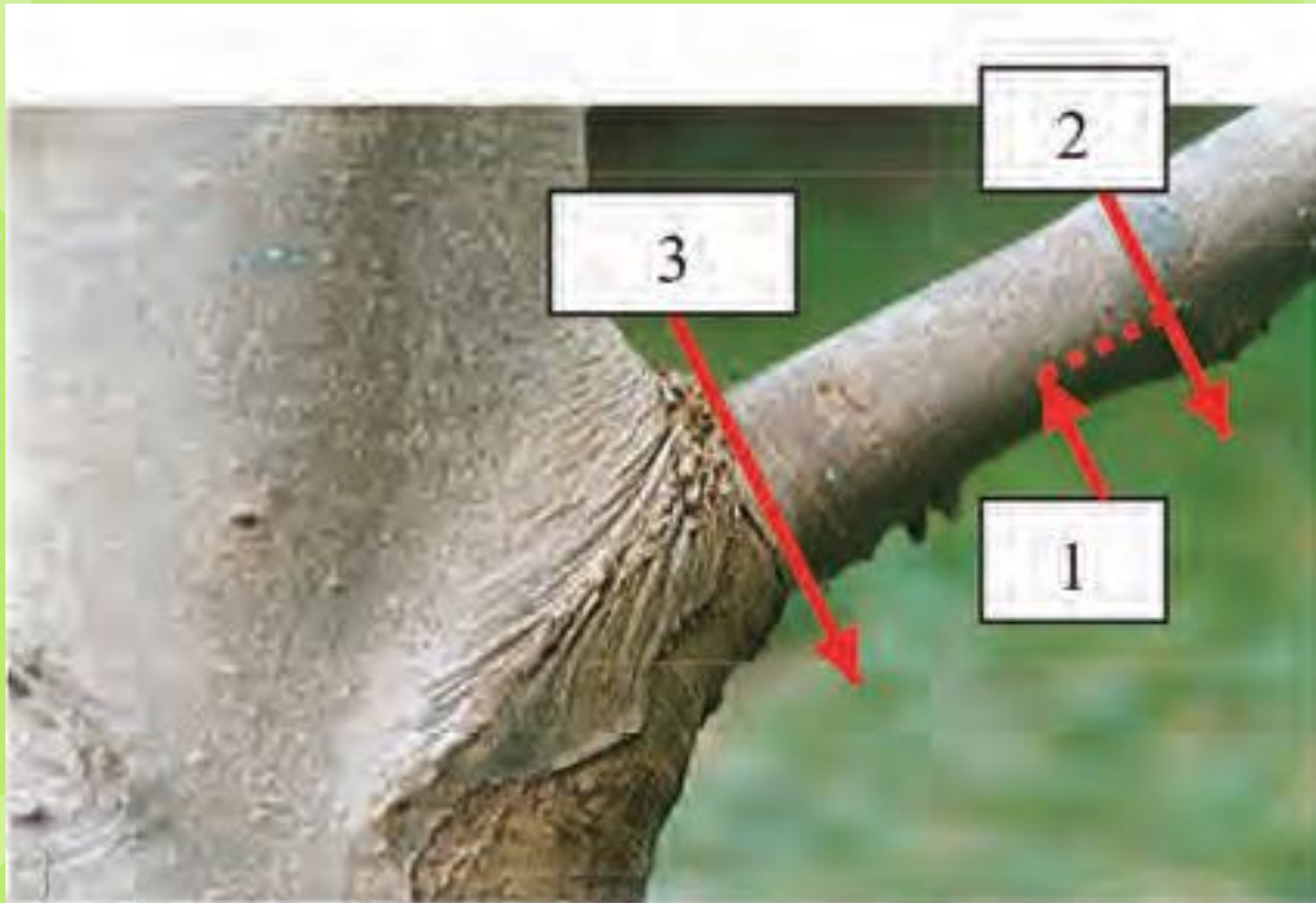
Fig. 3

Natural Target Pruning











Do not paint cuts!

Proven to do
more harm than
good.



Health and Safety

- Use of tools
- Personal Protective Equipment (PPE)
- Manual Handling



Use of tools

- **Hand Tools Only!**
- Tool storage and use
- Bowsaws
- Loppers
- Pruning saws
- Use of gloves and PPE
- Protecting the public



Tools



Personal Protective Equipment



Manual Handling Techniques



Summary

- Cutting down trees can be a good thing
- Have a plan
- Use proper tools and techniques
- Utilise the timber productively



Thank You

Paul Bullimore

Community Forester

North Lancashire Community Forestry Project

07884 657844

lwp@cf-trust.org

www.lancashirewoodlands.co.uk

