

Session One

- How a tree works
- Tree Identification
- Tree health



What are Trees and Woodlands?





North Lancashire Community Forestry Project

www.lancashirewoodlands.co.uk

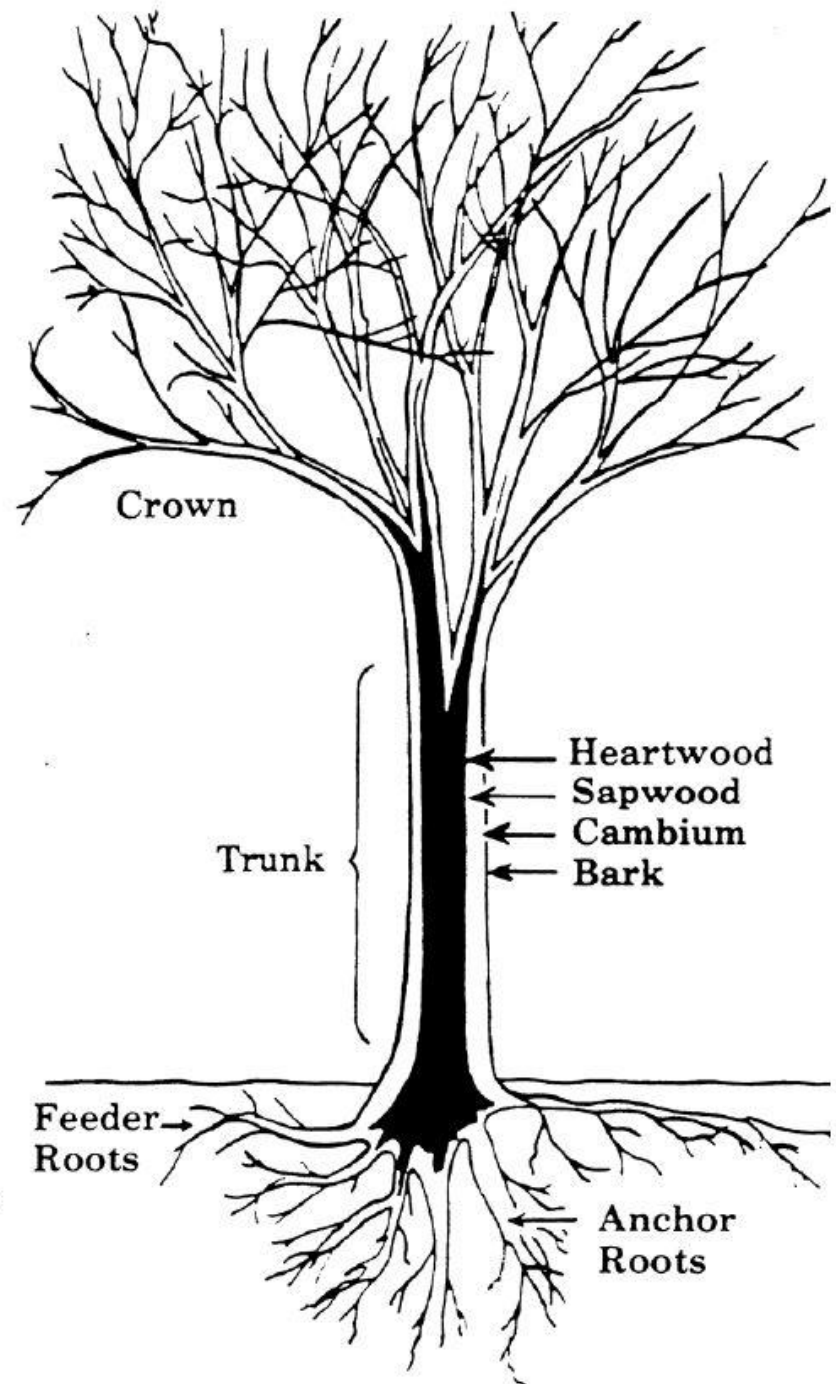


Tree Growth

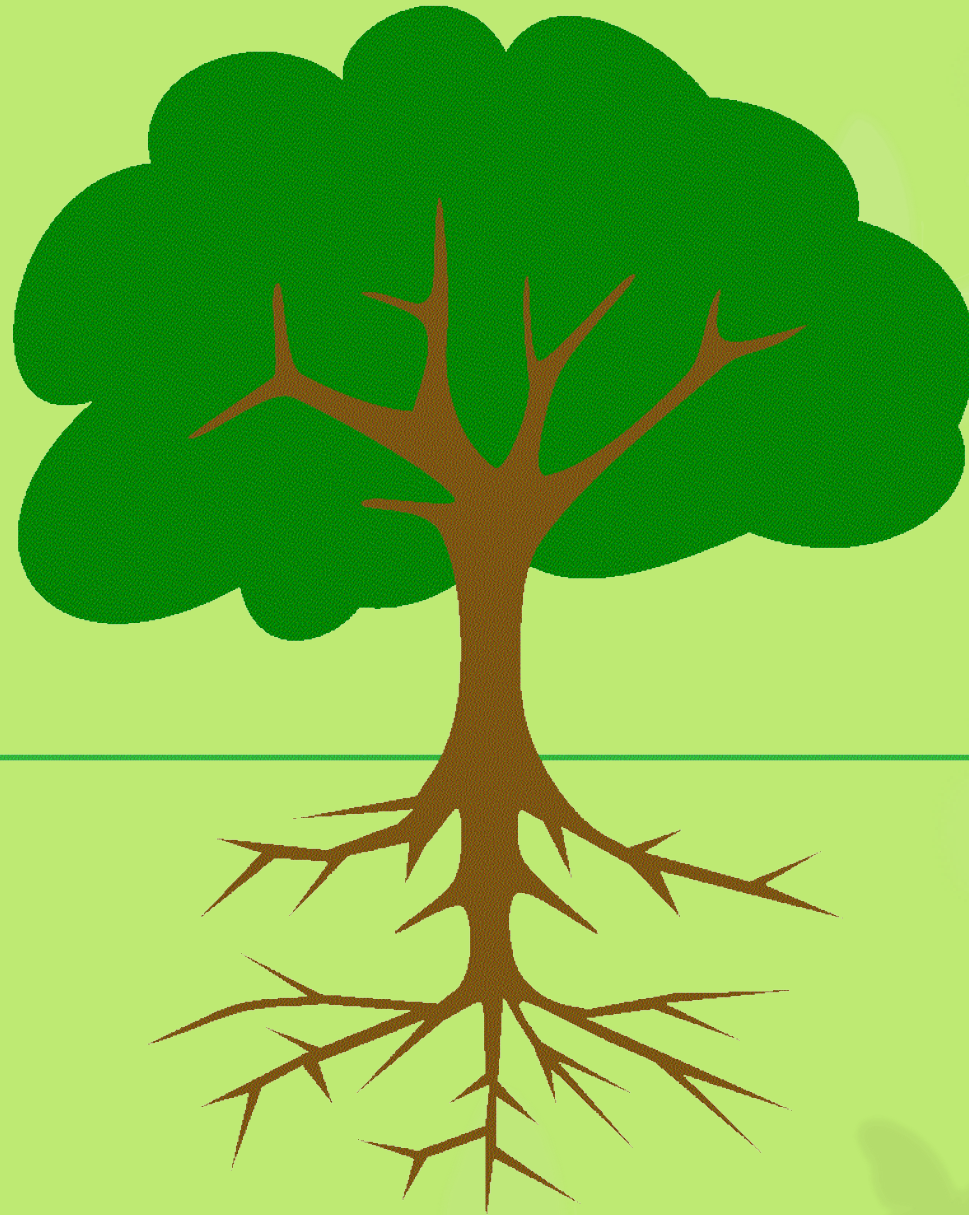
- Tallest free-standing organism in the world
- Actively dividing cells tips of branches and in the Cambium
- Photosynthesis

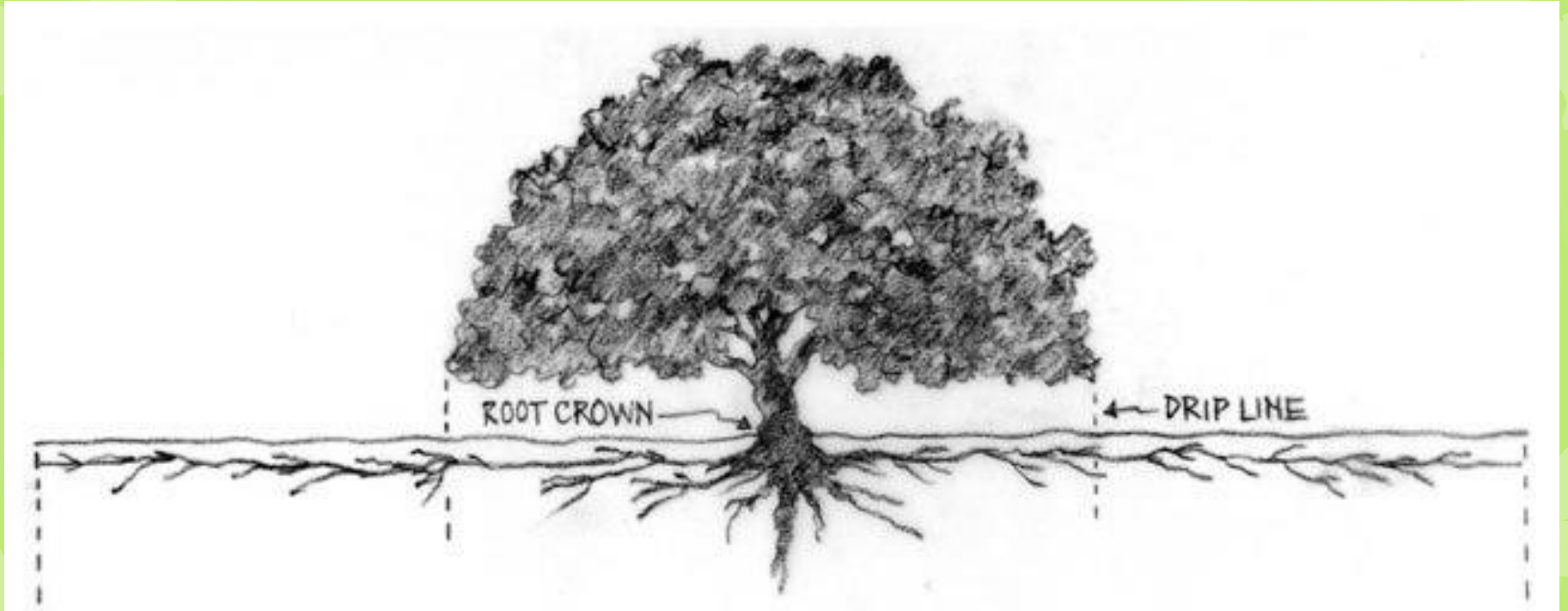


How a tree works



How a tree works

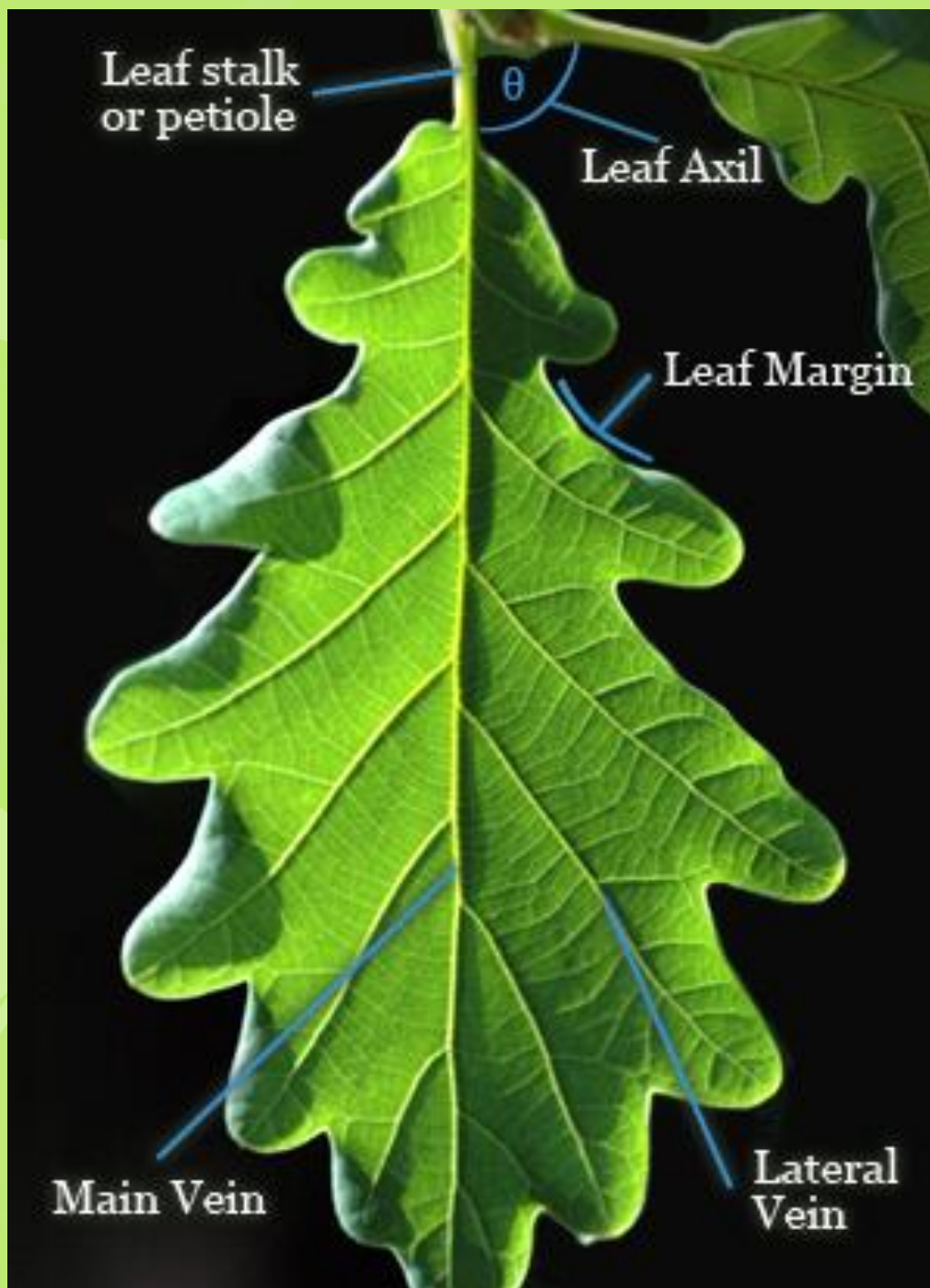




Identifying Trees

- Leaves
- Twigs
- Buds
- Bark
- Flowers
- Fruit





Names

Common Names

Botanical Name

Two parts - Binomial

Genus

Species



Names

- **Fraxinus excelsior**

Common Ash

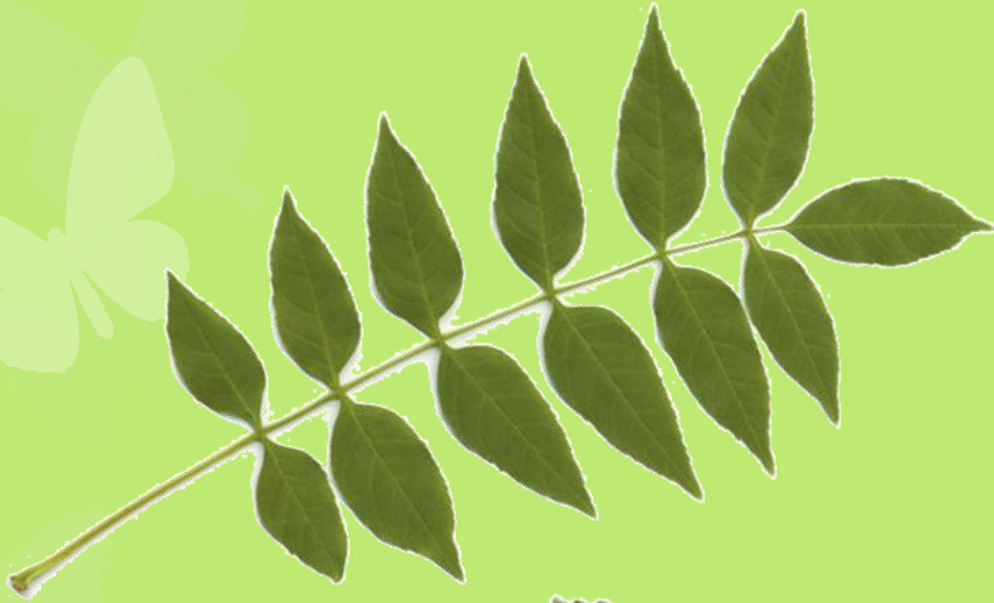
- **Quercus robur**

English Oak

- **Betula pendula**

Silver birch







Tree Health

Diseases

Acute oak decline

Ash dieback

Chestnut blight

Horse chestnut bleeding
canker

Phytophthora spp

Pests

Asian longhorn beetle

Horse chestnut leaf miner

Oak processionary moth

Oak pin hole borer



Asian Long Horn Beetle



Oak Processionary Moth



Horse Chestnut leaf miner





Ash Dieback



Ash Dieback



Acute Oak Decline



More Information

<http://www.forestry.gov.uk/pestsanddiseases>

<http://www.observatree.org.uk/resources/>



Biosecurity

- About minimising the spread of pest and diseases
- KEEP IT CLEAN!



Summary

- Trees are complex living organisms
- Identification can be made simple by working logically and getting to know your local trees
- Trees live with P&D. Keep trees healthy to minimise risk
- Keep it Clean!



Thank You

Paul Bullimore

Community Forester

North Lancashire Community Forestry Project

07884 657844

lwp@cf-trust.org

www.lancashirewoodlands.co.uk

